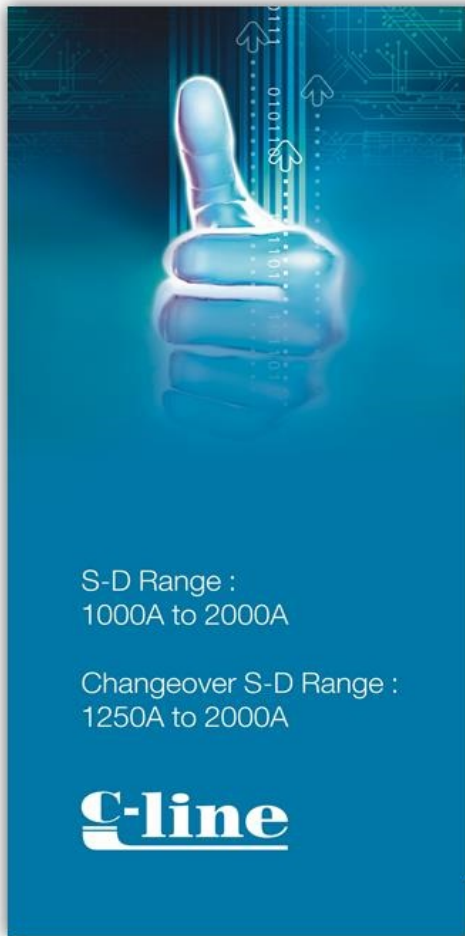


## C-line Frame 6 : Switch-Disconnecter & Changeover Switch

Written by Administrator

Thursday, 12 February 2015 04:53 - Last Updated Saturday, 07 March 2015 18:12



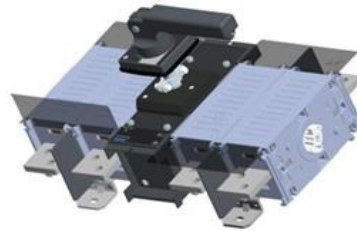
S-D Range :  
1000A to 2000A

Changeover S-D Range :  
1250A to 2000A

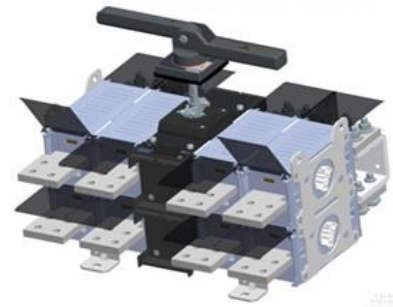
**C-line**



### Frame 6 Switch-Disconnecter



### Frame 6 Changeover Switch-Disconnecter



- ▶ **High Short time withstand Capacity :** Ensures reliable performance during short circuit fault conditions
- ▶ **High Life :** It offers high electrical and mechanical life, two times the requirement of the standard
- ▶ **User Safety :** Touch proof design by terminal shrouds, source separator & inter-phase barriers
- ▶ **User Convenience :** Flip-able Handle & Telescopic shaft for depth adjustment

[www.makeshengq.com](http://www.makeshengq.com)

